



Ralph C. Wilson, Jr. Centennial Park

Contractor Information Session

September 21, 2022

Building More
Than Buildings®





Because we're all one family.



Agenda



Project Overview



Bid Release Details and
Prequalification Process



Diversity
Commitment



Questions +
Discussions

Introductions



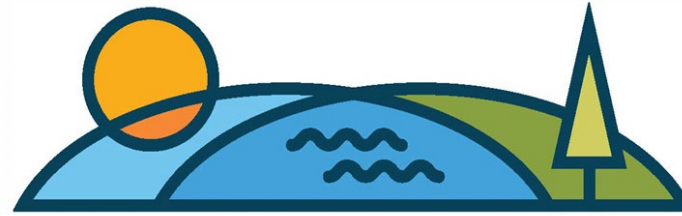
John Cleary
Gilbane Building Company
Senior Project Executive



Kelly Maloney
Gilbane Building Company
Senior Project Manager

Project Overview

Project Team

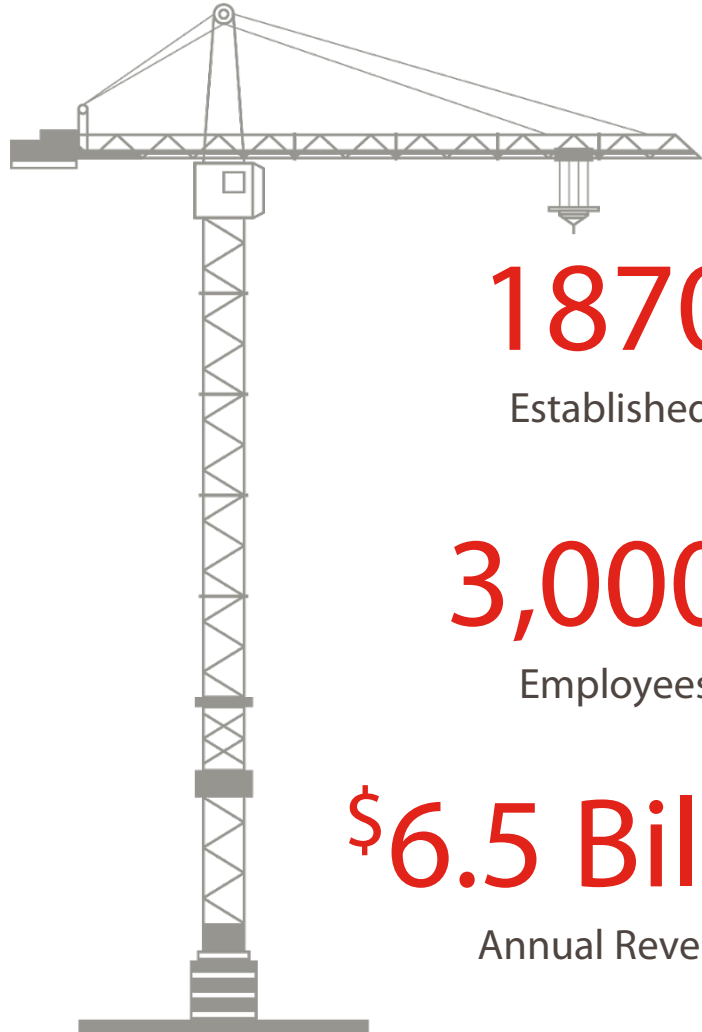


Ralph Wilson Park



Gilbane Building Company

Family-Owned, Privately-Held with 4th, 5th and 6th generation family members actively involved



1870

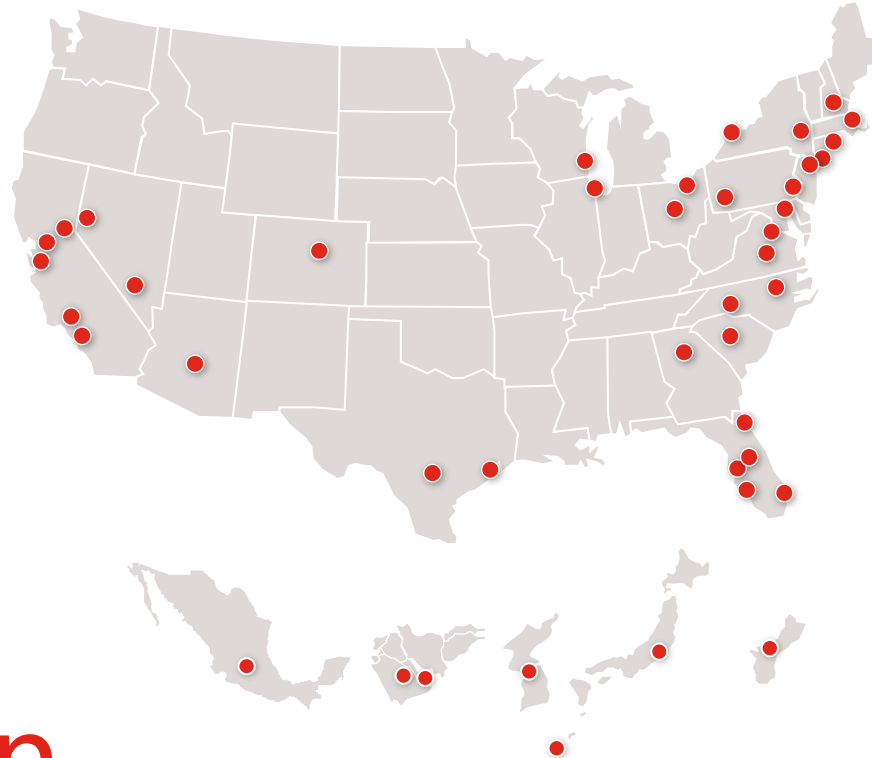
Established

3,000+

Employees

\$6.5 Billion

Annual Revenue



45+

Office Worldwide

Building in New York for Over

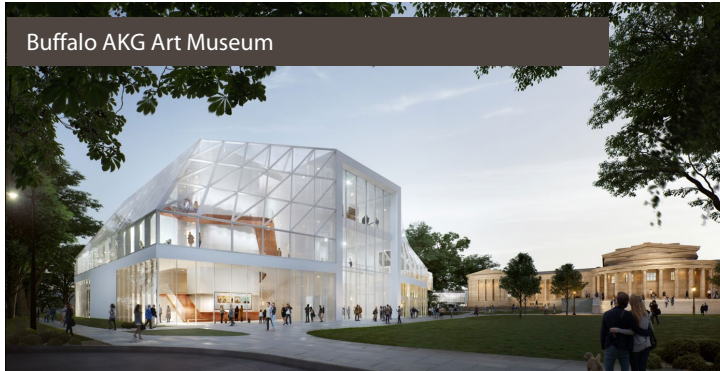
70 years



Gilbane Named Engineering News-Record (ENR) New York

2021 Contractor of the Year

Building in Buffalo



Buffalo AKG Art Museum



Buffalo Urban Development Corporation
Northland Central Rehabilitation



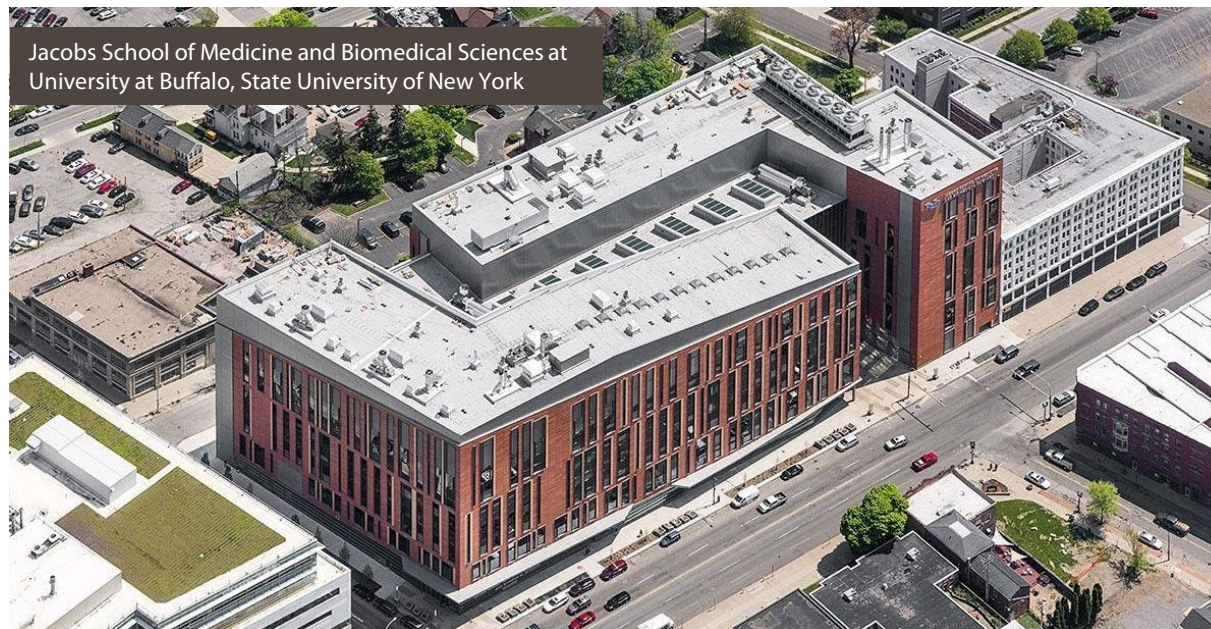
ECMCC Building Envelope and Lobby
Renovation



State University Construction Fund (SUCF)
Butler Library Buffalo State College



Thermo Fisher Scientific Warehouse Expansion



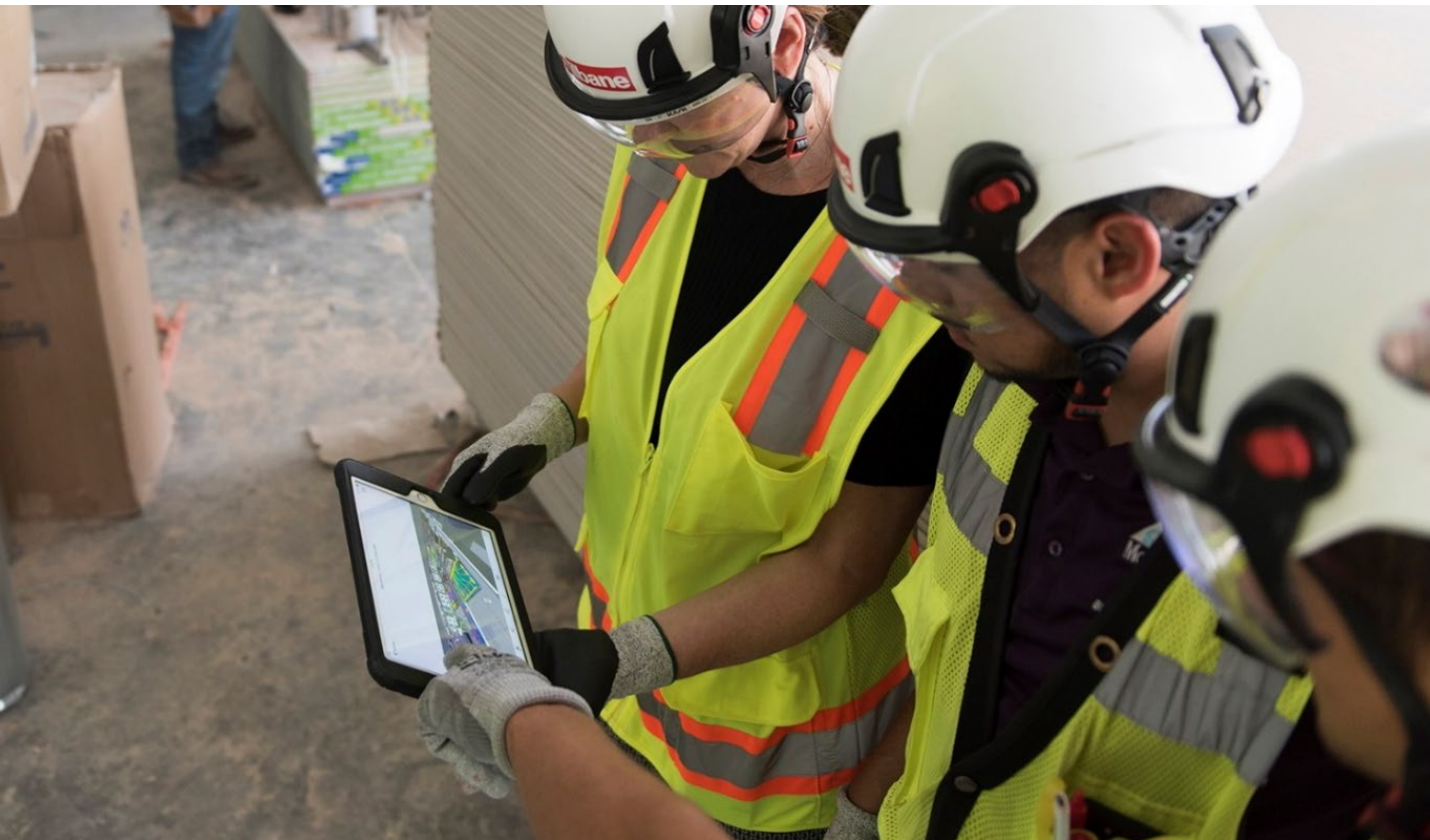
Jacobs School of Medicine and Biomedical Sciences at
University at Buffalo, State University of New York

**Gilbane is committed
to continuing the
strong tradition of
excellence in Buffalo**

10-Year Current and
Complete Experience
in Buffalo

13
Projects

\$1.6
Billion



Safety is Our #1 Priority

- Dust, vibration and noise control
- Safety plan and implementation to ensure a safe environment for everyone
- Fall protection standards above OSHA
- Substantial construction zone signage
- Cleanliness
- Develop a Project Specific Safety Plan

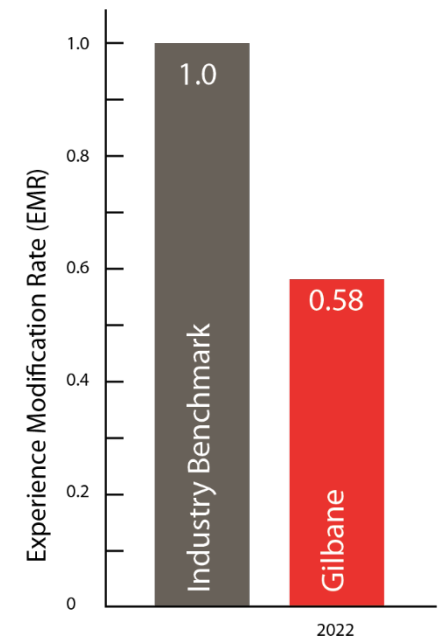
#1 In Safety 

6x Associated General Contractors (AGC) of **Safety Excellence Award** Winner



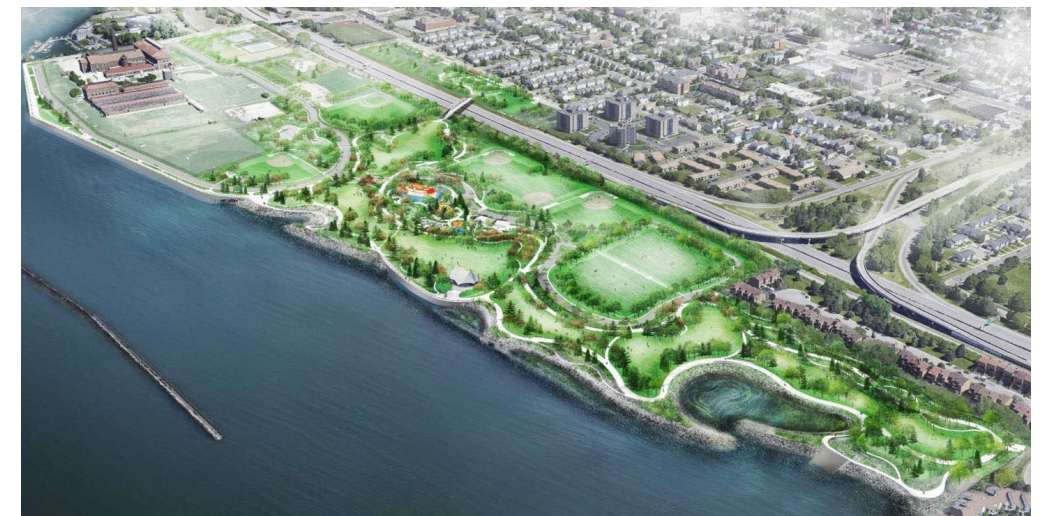
5x Construction Users Roundtable
CISE Safety Award Winner

In 2021
96%
of our projects had **zero** lost time injuries



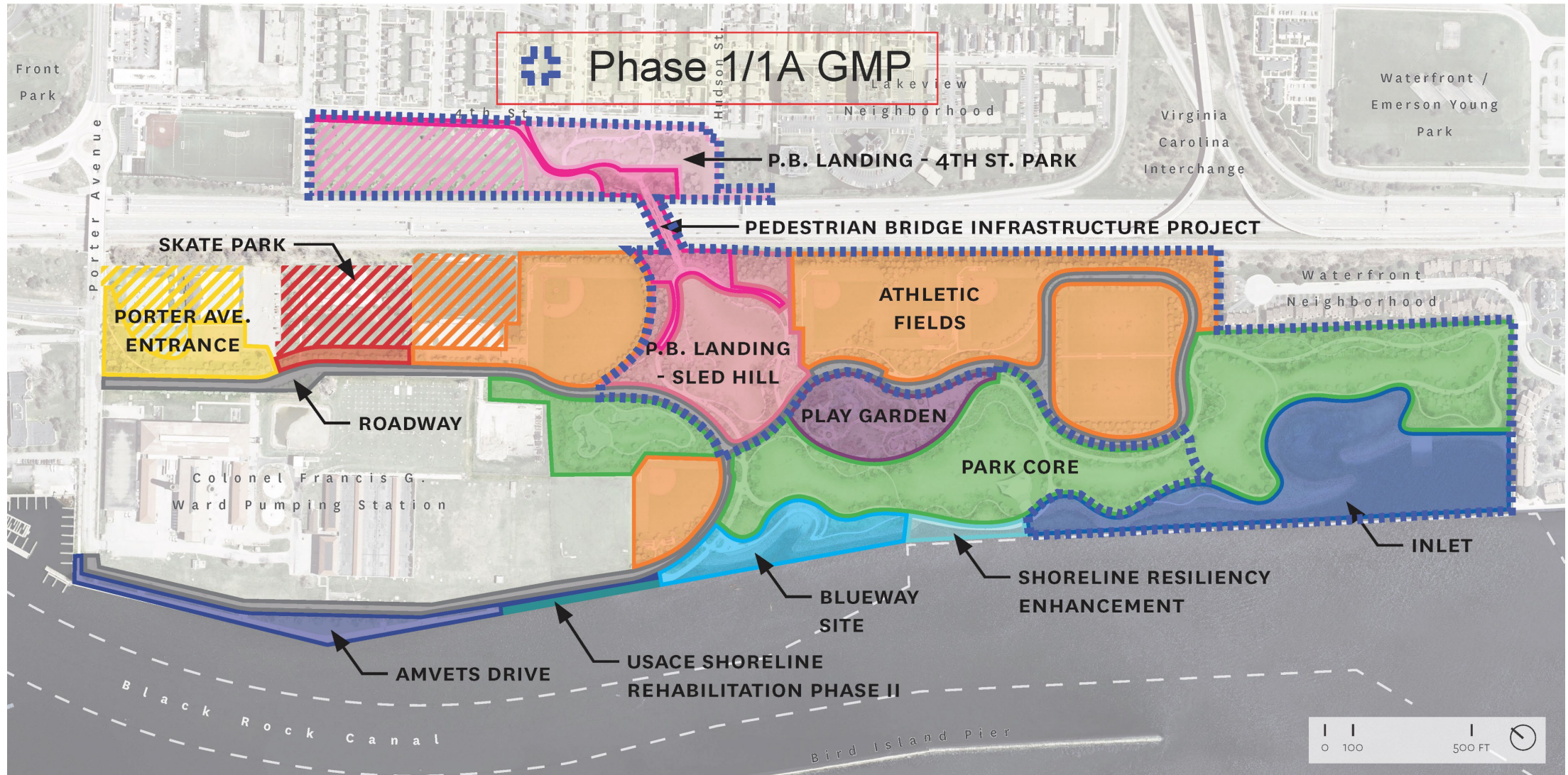
Project overview

- Redevelopment of existing shoreline to provide recreational opportunities for the community
- 100+ acre site located along Lake Erie
- Park amenities will include:
 - Soccer fields
 - Baseball and softball diamonds
 - Playground areas with custom equipment
 - Pedestrian and bike paths
- Construction will include a new 266-foot pedestrian bridge to extend over I-190
- Project has a Project Labor Agreement

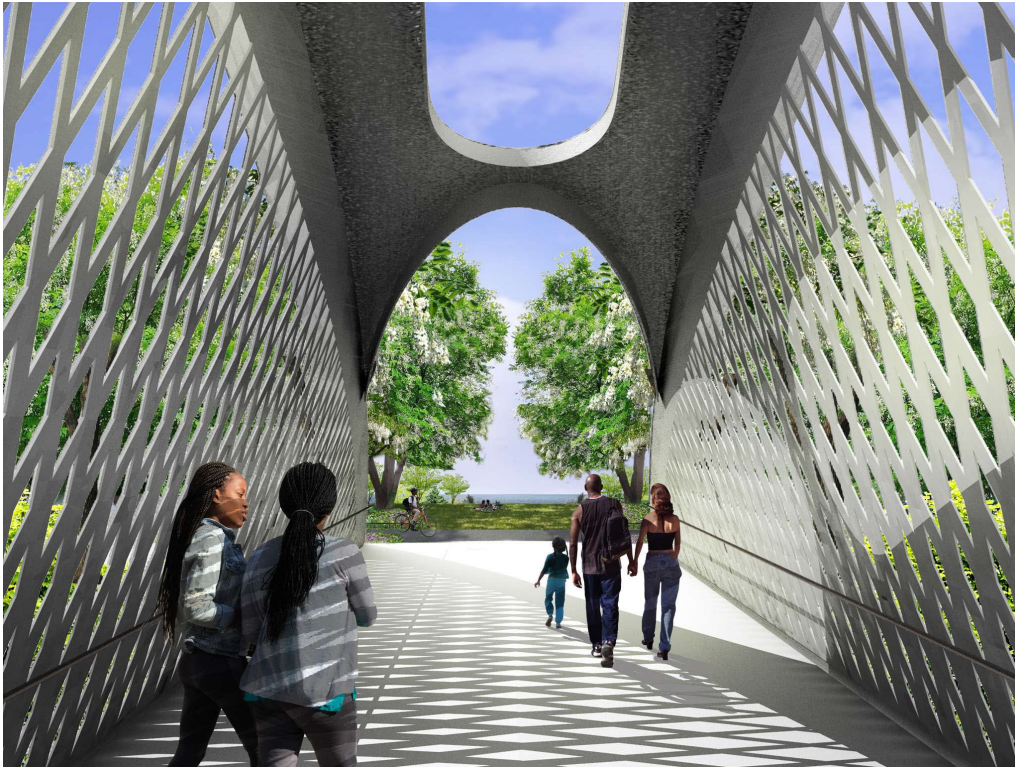


Site

Ralph C. Wilson Jr. Centennial Park - Work Areas



Bridge



Bid Release Details and Prequalification Process

Procurement milestone dates

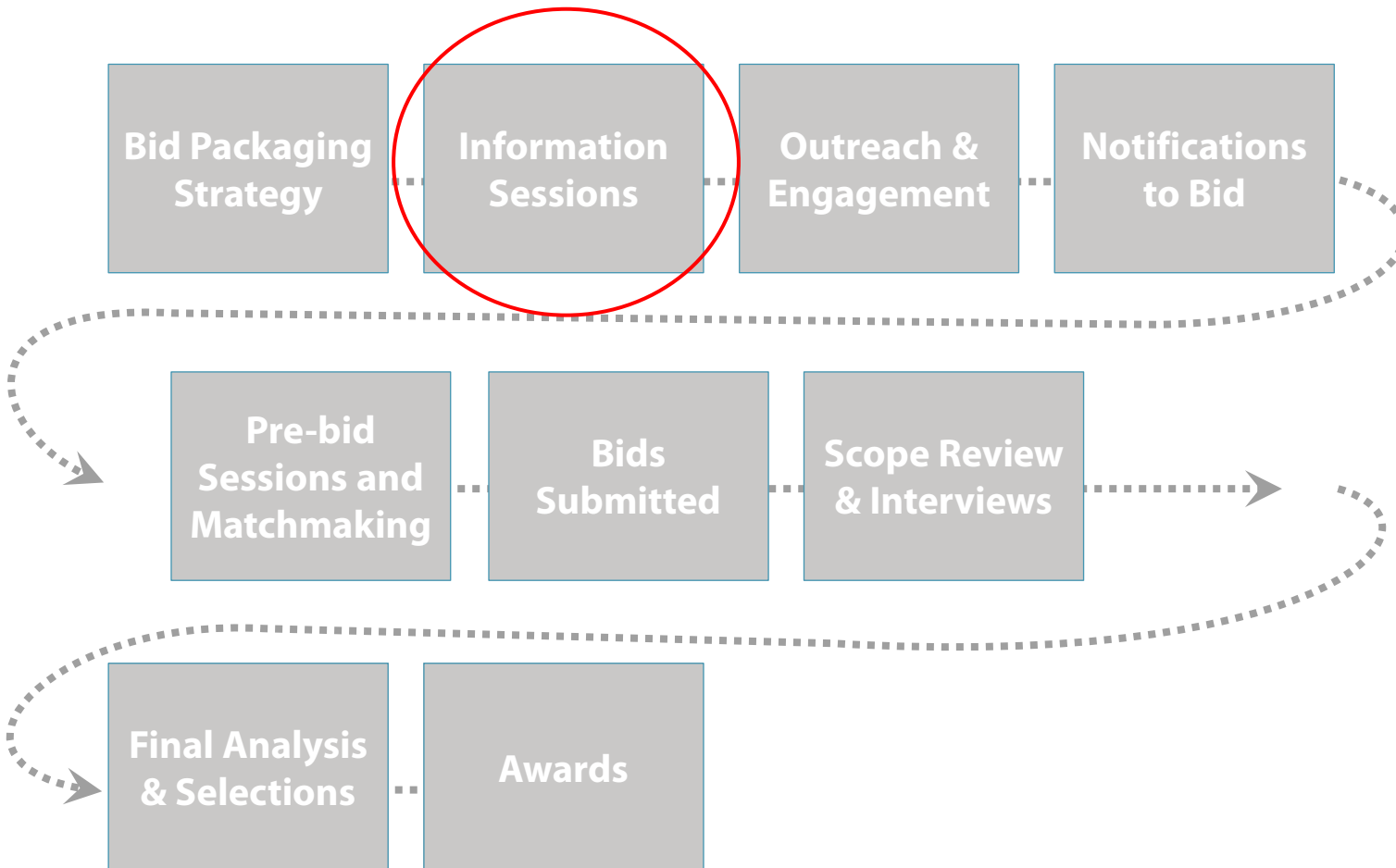
- Bid documents available: **October 3, 2022**
- Bid due date: **November 23, 2022**
- Anticipated contract award: **December 15, 2022**
- Mobilization: **March 15, 2023**



Anticipated bid packages

- Concrete
- Structural Steel and Erection of Pedestrian Bridge
- Site Work
- Landscape
- Enabling and Logistics
- Plumbing
- Electrical
- Site Finishes
- Foundation
- Shoreline Work
- Site Safety

Procurement process



George Mason High School
Falls Church, VA

Reed Elementary School
Arlington, VA

Stone Ridge School of the Sacred Heart
Bethesda, MD

INVITATION TO BID

Gilbane has hand-selected your firm for consideration in providing a bid for three projects entering the market in Q1 2019. Your firm's experience with K-12 projects combined with your past work with Gilbane, various designers, and high quality product installations are the criteria we're looking for in a partner to join us in the planning and construction of these unique buildings. We want to take the opportunity to let you know these bidding opportunities are coming soon!

George Mason High School

In the summer of 2018 Gilbane was awarded a design-build contract for the construction of the new George Mason High School in Falls Church, VA. The design of this 21st century learning environment is being provided by Stantec in association with Quinn Evans Architects. The \$105 million project totals 290,000 square feet.

| Key Project Milestone | Date |
|---|---------------------------|
| GMP 1 (Sitework, Utilities, Concrete, Steel, Geothermal, Elevators) | March 8 to March 28, 2019 |
| GMP 2 (Remaining Trades) | June 24 to July 15, 2019 |
| Construction Start | June 24, 2019 |
| Topping Out of Structure | April 2020 |
| School Construction Complete | December 2020 |
| Finish Sitework/Middle School Renovations | Spring/Summer 2021 |

Reed Elementary School

Gilbane is renovating and expanding the existing Reed Elementary School to accommodate at least 725 seats in time for the 2021-2022 school year. The \$55 million project will nearly double the building's usable space, from 61,000 SF to 110,000 SF. The existing building also houses the Arlington County Westover Library Branch, which will remain operational for the duration of construction.

| Key Project Milestone | Date |
|------------------------------|--------------------------|
| Bidding Phase (All Packages) | April 15 - May 15, 2019 |
| Contract Awards | August 2 - Sept. 1, 2019 |
| Construction Start | September 1, 2019 |
| Structure Top Out Projection | May 1, 2020 |
| Substantial Completion | May 31, 2020 |

Stone Ridge School of the Sacred Heart

Gilbane was selected as the construction manager-at-risk for the new student life center at Stone Ridge School of the Sacred Heart. The project scope will include a new performing arts and campus dining facility, campus walk, playground, parking and loop road. The team is comprised of Gilbane, JFW, Inc. and Hard Caplan Machi. The \$25.8 million project totals 51,000 square feet.

| Key Project Milestone | Date |
|------------------------------|--------------------------------|
| GMP 1 (Playground, Sitework) | Feb/March 2019 |
| GMP 2 (Remaining Trades) | August 19 to September 9, 2019 |
| Sitework Construction Start | May 2019 |
| Building Construction Start | June 2019 |
| Topping Out of Structure | June 2020 |
| Construction Complete | April 2021 |

1000 N. Glebe Road, Suite 1000, Arlington, VA 22203 | Tel: 703.322.7240 | www.gilbaneco.com

Gilbane



General condition opportunities

- Site security
- Construction waste management
- Progress cleaning labor
- Trailers/containers
- Blueprinting/reprographics
- Progress photography
- Temporary toilets
- Temporary fencing
- Final cleaning



Prequalification procedures and standard documentation

Prequalification procedures focus on three areas:

Safety – Ability of a contractor to operate safely

- Experience Modification Rate (EMR)
- OSHA 300 Logs
- Safety Plans
- Certificate of Insurance

Experience – Ability of a contractor to successfully execute the scope of work

- References
- Workforce
- Completed Projects

Financial Strength – Ability of a contractor to finance a project and meet future obligations

- Financial Statements
- Surety and Bonding Limits

Get prequalified!

1. If you are a first-tier contractor please visit:
<https://compass-app.com/auth/register>
2. If you have not yet registered on COMPASS, please visit the registration link above, and “Create A New Account” to begin the prequalification process with Gilbane

Any questions with the prequal process?

Contact:

Jesse Saladis

JSaladis@GilbaneCo.com



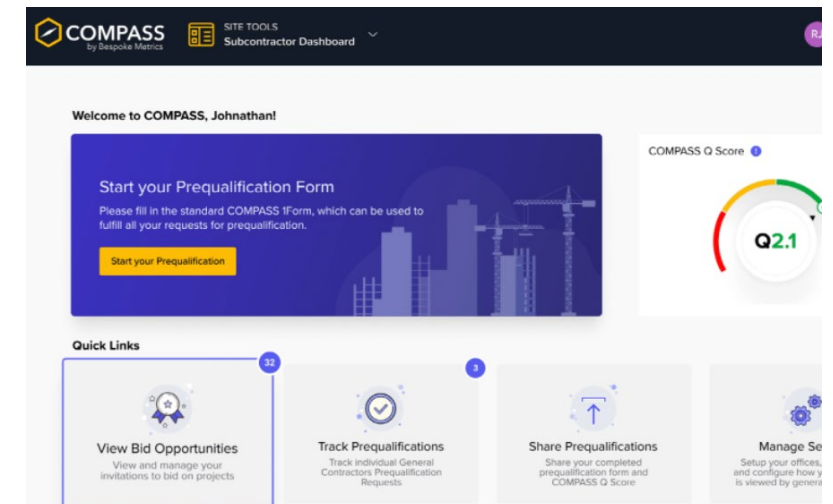
Jesse Saladis
Gilbane Building Company
Prequal Administrator



Please enter your email address

Email Address

Next



Diversity Commitments

Economic Inclusion and Community Development

An Economic Engine for the Local Community



Economic inclusion plan

Business Inclusion

- Minority Business Enterprise (MBE) - 25%
- Women Business Enterprise (WBE) - 5%

Workforce Inclusion

- Workforce Participation
 - Minority - 25%
 - Female - 5%
 - City of Buffalo - 30%

Any questions on economic inclusion?

Contact:

John Rooney

JRooney@GilbaneCo.com



John Rooney
Gilbane Building Company
Director, Economic Inclusion





Questions and Answers

Building More
Than Buildings®

